

# Annual Review 2025



*Proudly supported by Brisbane City Council*



*Dedicated to a better Brisbane*



**QWaLC**  
QUEENSLAND WATER & LAND CARERS



Front page photos:

Edith Wiskar: Platypus foraging in Ric Nattrass Creek, Darra

Photo of Swamp Wallaby from fauna camera in Wacol Bushland,

Wes DeMuth: Photo WaCC community planting site Spine St Park,

Lenore Bracey: Photo Wolston Road Park,

Ed Parker: Koala release in Pooh Corner Bushland Reserve.

Author: Lenore Bracey, President

Wolston and Centenary Catchments Incorporated. ABN: 71 225 469 038

100 Wolston Road Wacol, Queensland 4076

Email: [info@wacc.org.au](mailto:info@wacc.org.au)

Website: [www.wacc.org.au](http://www.wacc.org.au)



# President's Report 2025

This has been a year of both challenges and achievements, and once again our organization has shown the strength, commitment, and passion that comes from being a volunteer-driven, community-focused group working to enhance, protect and restore biodiversity of our local bushlands.

Over the past year, we have delivered on-ground projects; engaged the community through 18 community events and workshops; welcomed new faces; planted thousands of native plants; removed invasive weeds, worked 2680 volunteer hours; and strengthened partnerships with the local community.

We continued to collaborate with Federal, State and local government agencies, Queensland Water and Land Care (QWaLC), and other Catchment Groups to ensure our efforts aligned with broader environmental goals.

Our volunteers once again made a remarkable contribution of skills, energy, and care. These achievements reflect not only the hard work of our members but also the collective belief that local action can make a lasting difference.

Thank you to our volunteers who are the heart of our organization, whose passion and hard work makes everything possible. Our committee - for your guidance, dedication, and willingness to go the extra mile while managing our funds, meetings and website while also organising events and coping with family commitments.

Thank you to the Brisbane City Council Creek Catchment Program, especially our Creek Catchment Officer (Wes) who is dedicated to improving the local environment and helping us with advice, experience and support. Thank you to the Jamboree Ward Councillor Sarah Hutton and staff for their consistent support especially with spreading the word about our many activities. Brisbane Catchment Network (BCN) for strategic advice on legislation and broader issues, to the twelve Brisbane Creek Catchment Groups, QWaLC for administering the Public Liability Insurance which is thankfully provided by the Qld State Government to support our volunteers and the public during their volunteer work.

As we look to the year ahead, we remain committed to our restoration projects, increasing community education and engagement opportunities, building the resilience of our organization through strong partnerships, sustainable funding, and volunteer development. Together, we will continue to care for our local environment and inspire others to join us in creating a healthier, more sustainable environment for the future.

Thank you once again to everyone who has contributed to another successful year. It is an honour to serve as President of WaCC, and I look forward to building on this strong foundation in the coming year.

Lenore Bracey

# Contents

1. Our Creek Catchments	4
1.1 Wolston and Centenary Creek Catchments	5
2. About WaCC	6
3. Pooh Corner Environment Centre (PCEC)	7
4. Our Activities	8
4.1 World Environment Day	8
4.2 Fauna Monitoring Workshop	9
4.3 Platypus Monitoring	10
4.4 Koala Relocation Project - Pooh Corner Bushland Reserve	11
4.5 Clean Up Australia Day	12
4.6 Brisbane Big Butterfly Count	12
4.7 Cane Toad Bust	13
5. Our bush regeneration sites	13
5.1 Jindalee Recreation Reserve	14
5.2 Newcomb Park, Sumners Road, Riverhills	14
5.3 Owen Stanley Place Park, Ramu St. Darra	16
5.4 Phil Denman Park	17
5.5 Sanananda St Park Centenary Village Darra	18
5.6 Spine Street Park, Sumner	20
5.7 Wacol Bushlands – Wau Road Centenary Village, Darra	23
5.8 Wolston Road Park, Sumner	24
5.9 Wolston Creek Bushland Reserve (WCBR)	26

## 1. OUR CREEK CATCHMENTS

The Wolston and Centenary Creek Catchments stretch across three city council areas: Brisbane, Ipswich and Logan, bringing together a remarkable network of waterways and bushland.

At the heart of the Wolston Creek Catchment lie three tributaries - Sandy Creek, Bullockhead Creek and Ric Natrass Creek - all weaving their way through industrial areas, suburbs and bushland before merging into Wolston Creek. Together, they form part of a vital wildlife corridor, linking the Brisbane River through Pooh Corner Bushland Reserve and the Wacol Bushlands, then extending 11 kilometres south to the vast Greenbank Military Training Area (see map next page). This corridor is a lifeline for a whole range of native species including key species like the Platypus, Rakali, Echnida, and the Koala, (listed as an endangered species), offering safe passage, habitat, and food sources.

Each creek tells its own story:

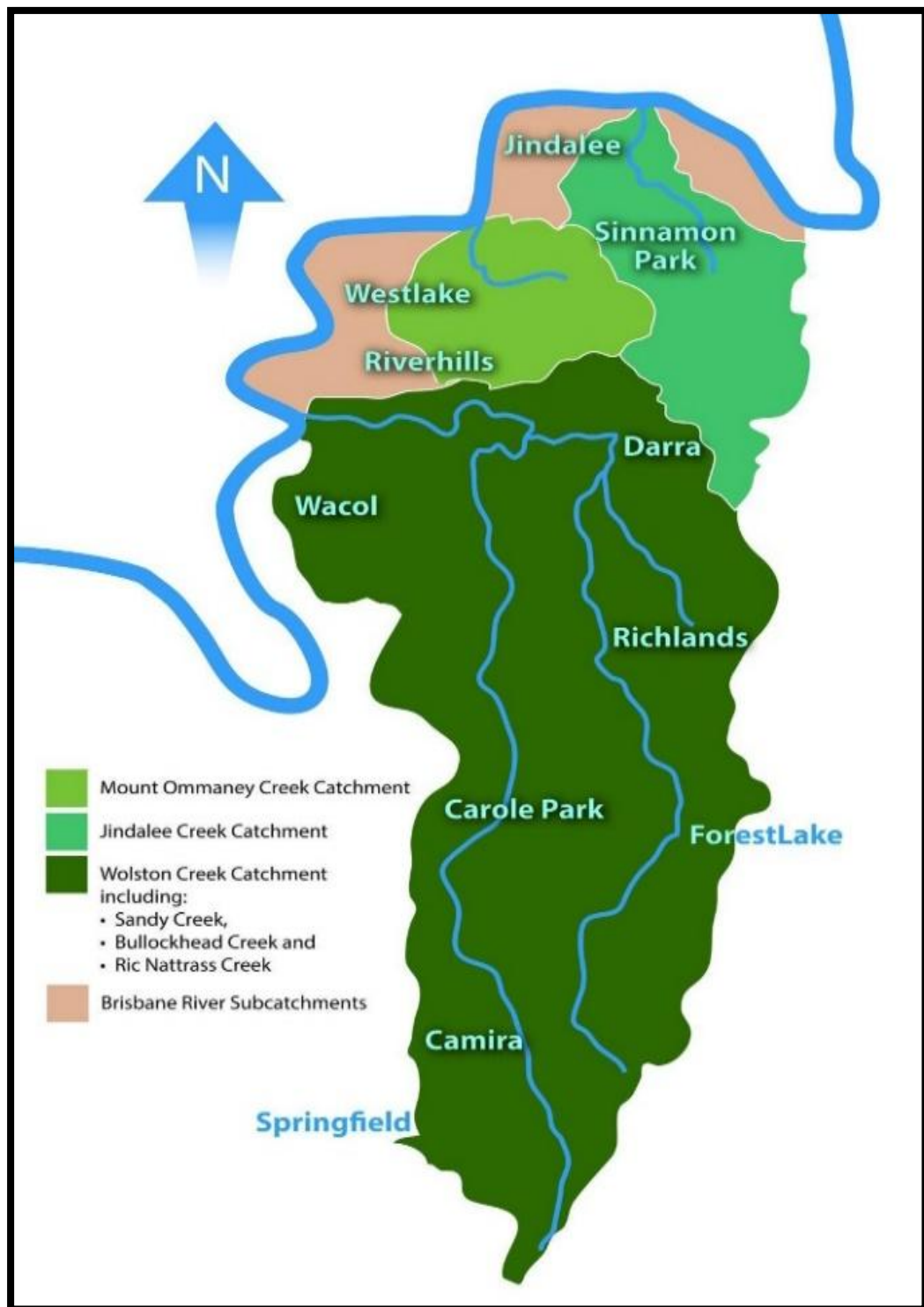
- ❖ Sandy Creek flows through Camira and Carole Park, cutting through the heart of Pooh Corner Bushland Reserve before reaching Sumner Park.
- ❖ Bullockhead Creek winds through Forest Lake and Richlands, feeding into Wacol Bushland before joining the waterways at Sumner.
- ❖ Ric Natrass Creek, named in honour of the late naturalist, runs from Richlands through Wacol, eventually merging with Bullockhead Creek.

In parts of this catchment, the vegetation is so rare and precious it has been classified as Endangered Regional Ecosystems or Of Concern, highlighting the fragile balance of species and soils that need our protection.

To the north lies the Centenary Creek Catchment, home to Mount Ommaney Creek and Jindalee Creek, which flow directly into the Brisbane River. Unlike Wolston Creek, this area is heavily urbanised - suburbs, homes and roads dominate, but pockets of natural bushland reserve still provide breathing spaces for people and wildlife alike.



## 1.1 Wolston and Centenary Creek Catchments



## 2. ABOUT WaCC

The Wolston and Centenary Catchments (WaCC) was formed in 2008 by local residents, becoming one of 12 official Catchment Groups supported by Brisbane [Creek Catchments program | Brisbane City Council](#). WaCC's volunteers focus on bushland regeneration, biodiversity protection, and sustainable waterway management, contributing thousands of hours of work each year delivering significant environmental and economic value to Brisbane.

As an incorporated, not-for-profit volunteer organisation, WaCC operates under the Office of Fair Trading (Qld) with a Management Committee, regular meetings, and an Annual General Meeting (AGM). It maintains Work Cover and public liability insurance, supported by [Queensland Water & Land Carers | \(qwalc.org.au\)](#) (QWaLC).

WaCC's membership is open to individuals, households, and corporations via a small fee. Email: [info@wacc.org.au](mailto:info@wacc.org.au). WaCC communicates via Website: <https://www.wacc.org.au> and, Facebook <https://www.facebook.com/WolstonAndCentenaryCatchments/>, page (800+ followers). We have strong management, policies, and secured grants from all levels of government, diversified its funding base, and begun updating internal policies.

**We celebrated our AGM on 16<sup>th</sup> October** and elected a new committee, pictures below, from the left, Brett Malcolm, continuing as Vice-President, me, Lenore Bracey, continuing as President, Wendy Santana, continuing as Secretary, Alex Ng as our new Treasurer, Continuing committee member Ethan Rodenburg, Yoori Kim as a new committee member and



picture above left



Lucy Hurrey continuing committee member

(Webmaster). A great team for the next year.

We are posing in our new shirts with WaCC logo,

the photo of one of our local

platypus can be seen in the background, that was donated by Edith as a prize in the raffle to support the Platypus Watch Program. Greg Tasney won the picture in the raffle and donated it to WaCC. We love it, thank you Edith and Greg. Long term committee member, Ed Parker did not renominate this year. He is planning to downsize some of his vast commitments.

**Our AGM Guest Speaker, David Zammit,** Wildlife Rescue Officer, RSPCA Rescue gave us an insight to the complexities around safely rescuing a range of wildlife species. Click on the following link for more information: [Wildlife Rescue QLD – wildliferescuequeensland](#)

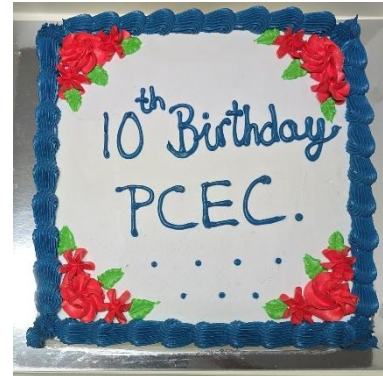


### 3. POOH CORNER ENVIRONMENT CENTRE (PCEC)

WaCC celebrated the ten-year anniversary of the Pooh Corner Environment Centre (PCEC) May this year. The Centre is supported by Brisbane City Council (BCC) providing funds for



maintenance, and other services. Cr Sarah Hutton attended, picture below right and acknowledged the value of the Centre's progress over the last decade and acknowledged Ed Parker's key role, in advocating for the establishment of the PCEC and serving as its dedicated Coordinator since the Centre's opening.



Amanda Brigden, picture below top left, Senior Program Officer, Waterway Health Integration, BCC, introduced us to the very large and exciting project for Spine St Park, Sumner designed to boost habitat for our precious platypus (Burrandul) along local creeks.



I took everyone for a visual journey through the decade of WaCC's Centre management, and the range of engaging activities held, including native fauna presentations, and water monitoring workshops, data collection sessions, and inspiring guest speaker events.



The PCEC continues to be a vibrant hub, for environmental learning and community connection and is located at **100 Wolston Road, Wacol**, beside the Pooh Corner Bushland Reserve picnic area, which offers public amenities and a relaxing natural setting. We thank the Natural Environment Water and Services division for their ongoing care of the surrounding Pooh Corner Bushland Reserve. For bookings contact [info@wacc.org.au](mailto:info@wacc.org.au)



## 4. OUR ACTIVITIES

### 4.1 World Environment Day

World Environment Day this year was a **wonderful community celebration** of our local environment and wildlife. The event was filled with **engaging stalls, inspiring talks, live music**, and **hands-on activities for all ages**, all showcasing creative and practical ways to live more sustainably.



Thanks to the support of **Cr Sarah Hutton**, we were thrilled to expand beyond the Pooh Corner Environment Centre into the beautiful adjoining green space, which made the day even more special. The event was proudly hosted by Cr Sarah Hutton, in partnership with Wolston and Centenary Catchments (WaCC) and Centenary and District Environment Action (CDEA). The Councillor's generous support and resources were instrumental in making the celebration such a success.

Visitors enjoyed a full and lively program, including **guided walks for birdwatching and koala spotting**, and an exciting **Geckoes Wildlife presentation** that offered up-close encounters with some truly amazing native animals, with the friendly wombat quickly becoming a crowd favourite!

The **photographic competition** drew a fantastic range of creative entries from residents young and old, while our **BCC Creek Catchment Officer, Wes**, entertained everyone with his ever popular *"What Scat is That?"* game, challenging participants to match the scat to its animal owner and another challenge to identify which feather belongs to which bird.

Meanwhile, Linda, Martin, and the Jamboree Ward team were busy distributing **free native plants** to enthusiastic residents — helping more locals bring native species into their gardens and support backyard biodiversity.

**Susan Dymock** shared an insightful update on the Pooh Corner Bushland Reserve Koala Relocation Project, picture left, and as WaCC President, picture below right, I was delighted to give an overview of our current projects and activities.



A big thank you also goes to the **Kiwanis Brisbane volunteers**, who kept everyone well-fed with a **delicious free sausage sizzle**, adding to the friendly and relaxed atmosphere of the day.



It was truly a fantastic day filled with learning, laughter, and community spirit - a celebration of our shared environment and all those who care for it.

## 4.2 Fauna Monitoring Workshop

Our City Critters: Engaging Communities in Urban Wildlife Monitoring Project is now completed. I purchased three fauna cameras and Dr Tamielle (Tam) Brunt held a workshop followed by a bush walk to find an ideal spot to place cameras in Wacol Bushland and Spine St Park in Sumner.

Our enthusiastic participants learned how to install and monitor native fauna at the Camera Trap Workshop at the Pooh Corner Environment Centre in May, picture right. This Project was made possible thanks to the Lord Mayor's Better Suburbs Grant.

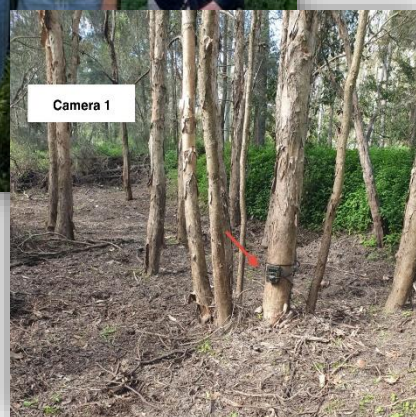


A group of wonderfully dedicated volunteers put in long hours installing cameras, filtering the hundreds of photos and entering data in a spreadsheet. Great work, good to have this completed. This important data will inform future projects and target further research and bushland rehabilitation techniques to help preserve our local bushland.

The cameras were installed in Spine St Pk and Wacol Bushland picture below left and recorded an impressive variety of urban wildlife including: One kookaburra, ibis, and a fox, a



rakali (native water rat) an echidna, a bush turkey, two species of bandicoots (northern brown and long-nosed) along with red-necked wallabies, eastern grey kangaroos, brush-tailed possums, and the park's resident wild dog 'Robert'



cameras across the catchment to in our bushlands. The volunteers role in sorting and uploading shared cloud-based database, stewardship and contributing to a understanding of Brisbane's unique urban wildlife. Ethan and Yoori spent many hours sorting the final photos.

We will continue to use the monitor species played a crucial images into a reinforcing local growing



### 4.3 Platypus Monitoring

Platypuses are an iconic semi-aquatic mammal endemic to Eastern Australia. They inhabit a range of waterway types, land uses, and environmental conditions, but generally require a habitat with permanent water, abundant macroinvertebrates, and stable banks for burrows.



Foraging along the Wolston Creek Catchment is a challenge for the platypuses. Their territory runs through some good quality bushland and permanent pools, but also industrial and residential areas that results in poor quality surface water draining off into the Creek.

Therefore, each sighting and photograph of a platypus along the Creek is an exciting event. It gives us hope of a thriving and continuing platypus population. We are fortunate that we have local WaCC enthusiasts Edith, Lan and Brett sitting by the Creek for hours to catch a glimpse of a platypus.

Dr Tamielle (Tam) Brunt, from Wildlife Qld. is transforming a pollution event into an opportunity for environmental innovation and community engagement, with funding resulting from an Environmental Undertaking Agreement. As a result of her passion for the platypus survival in our creeks, the funding has been diverted to rehabilitating the local environment. This begins with testing creek water to check on the food sources available to platypuses.

On World Rivers Day Dr Tam, held a monitoring workshop at the WaCC's Pooh Corner Environment Centre then led volunteers including Omega Chemical staff (Michael, Diesel and Ananya) to collect the first water samples for the multi-species eDNA survey in Bullockhead and Sandy Creeks, pictures supplied by Wildlife Qld. The biodiversity data on waterway health.





## 4.4 Koala Relocation Project - Pooh Corner Bushland Reserve

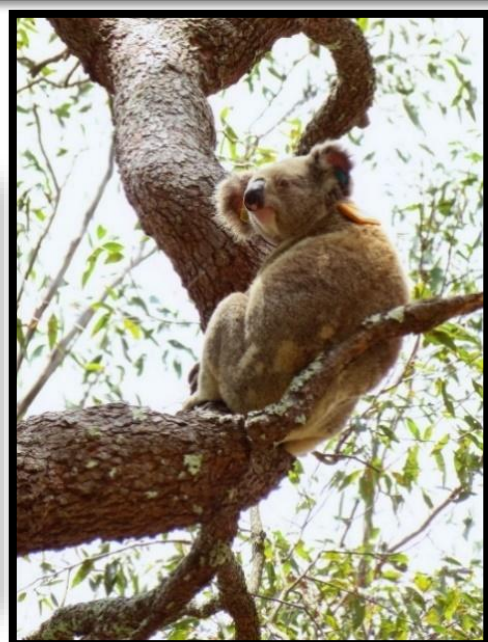
The Koala Research Program is a collaborative initiative between the Brisbane City Council, BCC and the University of Queensland check the Brisbane City Council website link: [Breakthrough for koala conservation in Brisbane bushland](#). The Project aim is to re-establish a healthy population of koalas in the Pooh Corner Bushland Reserve. The team from the Koala Ecology Group has successfully released of carefully selected koalas.

The first koala was released on 26<sup>th</sup> September 2022, and others followed across Pooh Corner Bushland Reserve and nearby Wacol Bushland Reserve. Some of the original eight females, have been successfully breeding. On the 1<sup>st</sup> of June 2025, at our World Environment Day celebration, at Pooh Corner Bushland Reserve, visitors had the opportunity to join a koala walk to spot Oscar, (who was easily visible from the walking track) one of 5 male koalas residing in the reserve.



He was some 25m high in the canopy of a large blue gum (*Eucalyptus tereticornis*) picture Ed Parker. Just like humans, koalas have specific food preferences. The blue gum (*E. tereticornis*) is preferred by Matilda (picture by Ed Parker on right) and others prefer the gum - topped box (*E. moluccana*).

Fortunately, there are enough of these tree species in the Bushland Reserves to keep all the koalas fed and producing healthy joeys like Matilda's Joey on the right.





## 4.5 Clean Up Australia Day

Our Secretary, Wendy organised her first Clean Up Australia Day. This is an annual event which empowers community members to form a group and get involved in community clean-up activities. Our keen volunteers cleaned up Sanananda St Park in Darra.



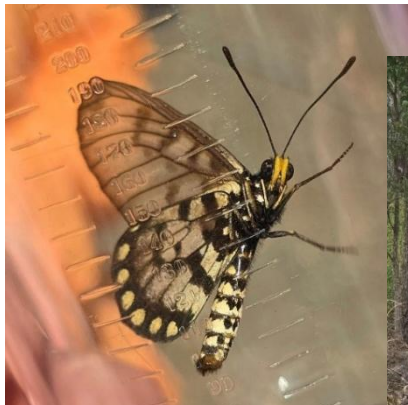
Maintaining several Bushcare sites is attributed to our team of enthusiastic and knowledgeable volunteers who persistently check plant survival rates while removing weeds. The combination of this strength and our partnership with the [Creek Catchments program](#) | [Brisbane City Council](#)

combined with BCC's willingness to improve Platypus Habitat, through its Platypus Strategic

## 4.6 Brisbane's Big Butterfly Count



Picture left, enthusiastic participants enjoyed running around catching butterflies with their nets during the 2025 Brisbane Big Butterfly Count (BBBC) event at Pooh Corner Bushland Reserve. Brisbane's Big Butterfly Count began with the butterfly season 2020/2021. An initiative of Brisbane Catchments Network (BCN) and all its member groups, the project is a direct result of BCN's Biodiversity Strategy and aims to



engage Brisbane residents of all ages and knowledge levels, provide learning opportunities and the gathering of local butterfly data. For more information follow: [Brisbane's Big Butterfly Count - Home](#).

## 4.7 Cane Toad Bust

On Saturday 25th January 2025. We partnered with Watgum for the nationwide Great Cane Toad Bust which aims to remove as many cane toads as possible. One week every year, Australians are challenged to trap tadpoles during the daylight and toad bust at night.



Corner Bushland Reserve near our Environment Centre 100 Wolston Road Wacol to search and capture cane toads and/or their tadpoles that were lurking in the wet mulch.

The eager participants met Brett and Wendy at the Pooh



## 5. OUR BUSH REGENERATION SITES

WaCC is part of the BCC Creek Catchment Program and has 9 active sites, for further detailed information check out the following link: [Creeks and catchments | Brisbane City Council](#).

This BCC website outlines the Creek Catchments Program below:

### Creek Catchments program

Council's Creek Catchments program supports 12 community-based [catchment groups](#).

We partner with volunteers, businesses and other government agencies to help restore and protect creeks and catchments.

We have 4 dedicated Council officers who help catchment groups in:

- providing technical advice, skills development and training
- supporting catchment group events and activities
- strategic planning of catchment restoration projects and sites
- budgeting project funding from [environment grants](#) and delivering [Community Conservation Assistance](#) funded projects.



## 5.1 Jindalee Recreation Reserve



WaCC has worked on this Reserve since the early 2000's with various grant funding and in 2023 funding from Jindalee Rotary. The current carers of this area meet regularly to weed and maintain the planting.

Though water can pick up speed through this waterway during storms and heavy rain periods, there was less damage than expected from Cyclone Alfred. The plants have now recovered and are maintained by the Bushcare group.



## 5.2 Newcomb Park, Sumners Road, Riverhills

Newcomb Park has come a long way since its early days as a degraded site, heavily impacted by the suburb's early development. In 2021, WaCC received BCC approval to begin rehabilitation work here, and since then our volunteers - led by the tireless efforts of Colin - have transformed the park into a growing success story. Colin has been managing the site almost daily, planting a total of 314 seedlings in the last 12 months. He keeps the project moving forward with remarkable dedication (pictured right). He has reported working for 588 hours since beginning in 2021.

The site continues to receive valuable support through the Brisbane City Council's Public Works program, Save Our Waterways Now (SOWN), and the BCC Creek Catchment Program. Our BCC Creek Catchment Officer, Wes, has been instrumental in providing tools, plants, and expert guidance on weed management and plant species selection.





Colin continues to battle the weeds, check for fire ants, and keeping the park mower at bay. To define the planting zones, he's used Lomandra and Blady Grass borders, which clearly define the edge of the restoration area and the maintained lawn (picture below). This practical and attractive solution also helps the mowing contractor avoid accidental damage. This is a strategy Wes recommends and WaCC now uses across several sites. Pictures below.



Erosion remains one of the key challenges, particularly along the outer edge where the land drops away. Colin and Wes have been trialling coir logs, which have proven effective on gentler slopes (picture right).



Cyclone Alfred in March 2025 caused significant erosion damage on the



top embankment. Photo (below left) shows the resulting landslip.

Picture on the right shows the area successfully replanted. The



key goal is to prevent further erosion and stabilise the large eucalyptus tree at the top. Thanks to Colin's consistent working bees

and replanting, the slope is now steadily stabilising with new growth.



### 5.3 Owen Stanley Place Park, Ramu St. Darra

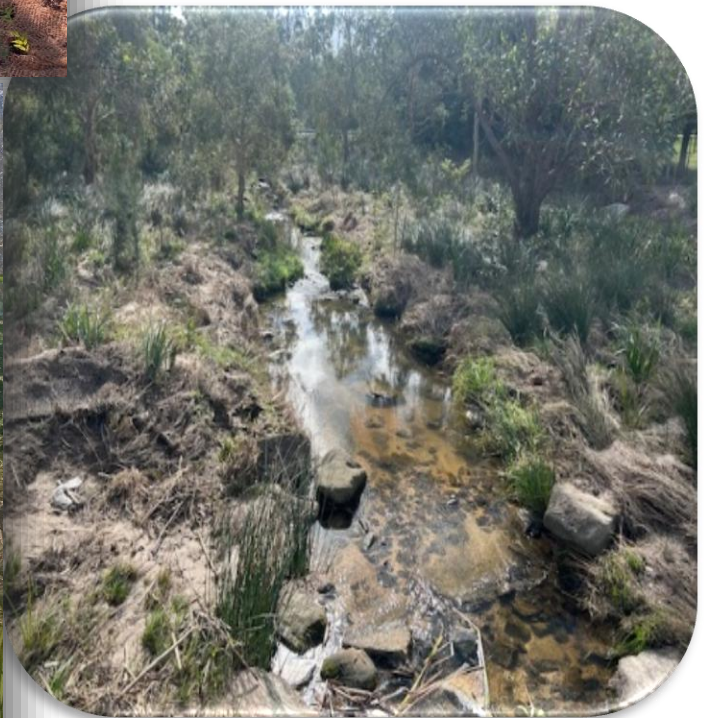
**Owen Stanley Place Park** stretches from Ramu Street across Ric Natrass Creek to Owen Stanley Place, bordered by Wau Road, Kokoda Street, and the Motorway bridge.

Once used as a storage site during the Centenary Highway and Ipswich Motorway upgrades, the area has since come back to life. The soil has recovered, native plants are thriving, and despite regular flooding, young trees now stand over two metres tall — a real sign of resilience and renewal.

Volunteers continue to care for the site through regular maintenance and community planting days, often joined by local residents, and Bushcare supporters. A successful BCC rehabilitation project between Kokoda Street and the Motorway has added to this progress.



The photos below show the three stages of rehabilitating Ric Natrass Ck. The first photo taken by Wes our CCO, is from 2023 with the Operation Platypus Community Planting event., the second a few months later and the third as it is currently



## 5.4 Phil Denman Park

BCC works in partnership with WaCC in parks, waterways, and bushland in our local parks and reserves to enhance biodiversity and restore and reinstate healthy natural ecosystems. Council provides Community

Conservation Assistance funding for bushland restoration projects through its Community Conservation Partnership Program. Creek Catchment Officers manage this funding. Phil Denman Park has received this funding in 2023-4 CCA Project, at Phil Denman Park, Jamboree Heights. It focussed on supporting the previous primary school planting by students, increase the canopy and the stability of the creek bank as this is a high velocity flowing creek during rainstorms.





## 5.5 Sanananda St Park Centenary Village Darra

The aim at this site is to re-establish, regenerate, and expand the riparian corridors of Bullockhead Creek by controlling weeds, stabilizing the site with native vegetation, and encouraging natural regeneration of the area by successfully removing weeds around the plantings.



## our Autumn Planting

The Lord Mayors Environment Sustainability Grant was utilised to revegetate a 280m<sup>2</sup> section of the park with 700 native plants at our Autumn Planting Event in March this year was well attended by the 35 amazing volunteers who turned up ready for work.





Angie's Barista Koffee kept us working with the free coffee. Three generations of one family attended, local residents, and the Alpha Phi Omega Qld Australia Alumni Association



enthusiastically joined in. This Project was proudly supported by **Brisbane City Council** Thank you all.

The planting survived relatively unharmed! from Cyclone Alfred and only needed some minor tidying and a few replacement plants, though one of our coir logs took a trip down

the creek and was hidden for a few days until our volunteers located and repositioned it.





## 5.6 Spine Street Park, Sumner

This beautiful site is bordered by the Centenary Highway, Ipswich Rail Line, Wolston Road and Spine Street, with Bullockhead Creek curving gracefully through the middle. Although the area is prone to flash flooding, it continues to recover well each wet season, showing remarkable resilience.

WaCC and BCC have focused on providing more dense vegetation along Bullockhead Creek's riparian corridor - an important habitat where platypus have recently been spotted.

The area holds significant environmental value and offers a surprisingly tranquil space for both Bushcare and quiet reflection. Sitting by the creek with a cuppa after a morning's work, you're surrounded by song from the resident Willy Wagtail (as locals call it) and the rustle of leaves, with the distant hum of the highway fading into the background. Dedicated Bushcare efforts of volunteers Susan and Michael regularly include protecting naturally regenerating native plants with tree guards and nurturing the next generation of local Bushland.

In 2025, BCC secured \$1.8 million. This project is funded by the Australian Government Natural Heritage Trust under Urban Rivers and Catchment Program, supported by Milton Dick MP. BCC will deliver the Ecological Restoration Plan for this area. WaCC is proud to partner with BCC's Creek Catchment Program, Community Conservation Partnerships (CCP), and the Natural Environment and Waterways (NEWS) team on this important project.

While BCC manages the overall project, WaCC organised the very successful **"Planting for**



**Platypus"** community event in May. Around 200 enthusiastic volunteers joined in, planting 2500 native plants along the upper creek bank.

It was a wonderful day, as the following two pages of pictures show. Uncle Henry and the Yugara Dancers

shared a Welcome to Country and Smoking Ceremony to begin the day. The Yugara Dancers represent the Gateebil and Yerongpan clans of the Yugara language. The event was filled with community spirit and families who enjoyed the D'Aguilar Wildlife Show with Ben, children eagerly planted their seedlings, and everyone loved meeting a koala up close. A special highlight was Dr Tam and Edith sharing photos of our local platypus, taken right here in Bullockhead Creek. One was donated to our Environment Centre.









Photo below Dr Tam Brunt and Edith showing the raffle prizes, picturing local platypus.





## 5.7 Wacol Bushlands – Wau Road Centenary Village, Darra

We have been working actively to revegetate the banks of Ric Natrass Creek in this site since 2014 with regular Bushcare, especially by Michael who will work on the site each week. Bushland Restoration is a long-term activity which includes regular maintenance. The creekbanks in this area erode easily so we concentrate on stabilising the banks.

The past planting of native species is doing well, despite local flooding events and the main activity now is continuous weeding and infill planting to improve the density of vegetation. This site has the potential to encourage more ground dwelling birds that usually go unseen. Increasing the planting density with low growing shrubs and native grasses will encourage small birds and protect them from predators.

There is a multitude of species of flora and fauna located in Wacol Bushlands. Some of these that Michael and other local naturalists have observed here can be found on the link below:

<https://inaturalist.ala.org.au/projects/wacol-bushlands>

This is a very pleasant site to walk through and many locals utilise it for walking their dogs or just walking to observe the kangaroos and enjoy the trees.





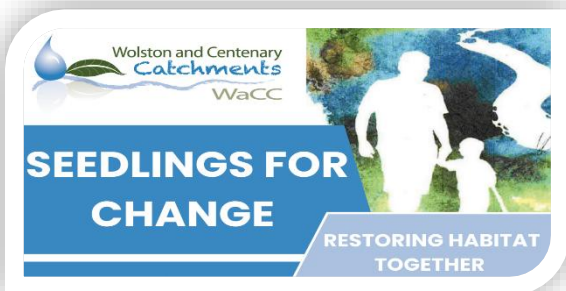
## 5.8 Wolston Road Park, Sumner

With platypus numbers declining in Brisbane Waterways, it is crucial that we rehabilitate their habitat by increasing the density of vegetation along our creek lines; keep the waterways clean by preventing erosion and sediment moving into the creeks; and providing protection for platypuses while they forage.

This Park is rather wild and beautiful in some areas, as the picture on the right shows. I love walking through this site. It is an example of how a natural area can survive with our care despite being near an industrial site.

Wolston Rd Park is bordered by Bullockhead and Sandy Creeks and adjacent on both sides is the industrial area. The outdated design of older industrial estates sees runoff entering the creeks through large pipes near the waterways. Therefore, it is inevitable that pollution events will occur, and unwanted substances enter the creek, and this has happened near this park.

However, funding from the Environmental Undertaking has been diverted back to the community for environmental rehabilitation. WaCC has received the funding for a program of soil sampling and analysis and to a rehabilitation project for the bushland running along the creeks. The Project will run for three years, and the first part of the project commenced in June this year with a Community Planting Event, poster left. I organised a Wildlife show, where surprisingly, snakes were popular, picture below right and Tam, picture below left.



Launching her eDNA Project. This project is discussed in 4.3 of this Review.





At the Community Planting event on the 29<sup>th</sup> of June, volunteers planted 650 native species and Omega Chemicals staff from the Sumner Industrial estate assisted with the planting.



Picture below left, shows, from the left, Ananya, Omega Chemicals Environmental Officer, me President of WaCC, Wendy Secretary of WaCC and our BCC Creek Catchment Officer, Wes the day before the planting. We carried out the pre-planting site inspection.

Below pictures Ananya and Dr Tamielle Brunt getting to work on the planting day. Some of our 42 enthusiastic participants, pictures below made short

work of the planting, Lynn and Ray from our neighbouring Oxley Creek Catchment Group joined in, as did Mark from Omega Chemicals and some of our regular volunteers



This young lady in oval picture on the right was very helpful and loved running around collecting all the plant pots and stacking them together. Her little brother helped once he eventually got his gloves on correctly.



## 5.9 Wolston Creek Bushland Reserve (WCBR)

Wolston Creek Bushland Reserve (WCBR) is the largest of WaCC's management sites, covering around 47 hectares alongside Sumners Road in Riverhills, where Wolston Creek meets the Brisbane River. The Reserve is surrounded by a mix of mown parklands, residential areas, intact and restored bushland, and agricultural land across the creek - making it a wonderful mosaic of urban and natural spaces.

This special place exists today thanks to the passion and persistence of residents who, in 2003, successfully lobbied to have it declared a Bushland Reserve. Soon after, Warner Dakin began the first Bushcare efforts. This set in motion decades of community stewardship and restoration.

Today, the Reserve is co-managed by WaCC and BCC through the Habitat Brisbane program. It's a popular area, valued for its natural beauty, rich biodiversity, and peaceful walking tracks (picture right) that invite visitors to slow down and connect with nature.



WCBR provides vital habitat for a wide range of native plants and animals. Seven plant species found here are considered rare in Brisbane, and the area also supports diverse wildlife, including many bird species, kangaroos, wallabies, and echidnas. The reserve's healthy mix of ecosystems also allows fauna to move freely along the creek corridor to neighbouring bushland.

The site's varied terrain and vegetation communities provides challenges, particularly from invasive weed vines that can smother and damage mature native trees. Thanks to a generous private donation, WaCC was able to take on this challenge which included detailed mapping, and targeted control of invasive vine species.



The Bushcare group focus on natural regeneration methods, allowing nature to heal itself with assistance rather than through planting. Working bees are held from **7:30am to 10am on the fourth Sunday of each month**, weather permitting. The group is led by the dedicated **Team Leader, Lee-Anne**.

To find a Bushcare Group near you, phone Brisbane City Council on **3403 8888** and join the effort to protect and restore our precious local bushland!